

■ Przepusty stacyjne wewnętrzne typu SP

Indoor bushings type SP

Część izolacyjna: porcelana elektrotechniczna C110 lub C130 wg PN-EN 60672-3.

Insulator body: hard porcelain C110 or C130 acc. to EN 60672-3 / IEC 60672-3.

Szklivo: białe.

Glaze: white.

Kołnierz: stop aluminium dla napięć 1 ÷ 24 kV,

żeliwo sferoidalne, cynkowane zanurzeniowo dla napięcia 36 kV.

Flange: aluminium alloy for voltages 1 ÷ 24 kV,

spheroidal cast iron, hot-dip galvanized for voltage 36 kV.

Sworzeń: miedź.

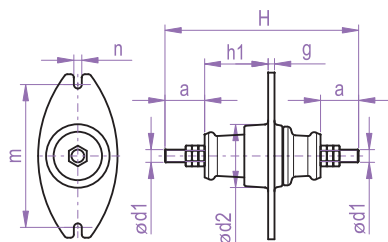
Bolt: copper.

Nakrętki: mosiądz.

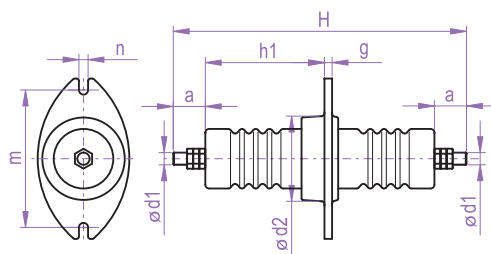
Nuts: brass.

Spoivo: siarkowe.

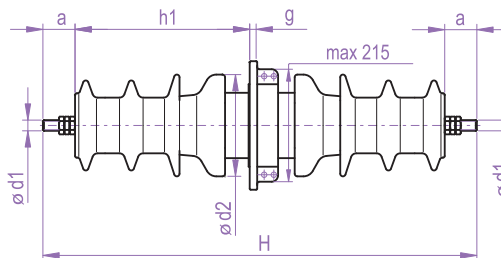
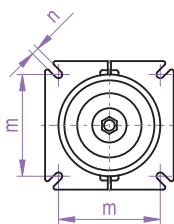
Cementing: sulphur cement.



Rys. A
Fig.



Rys. B
Fig.



Rys. C
Fig.

| Typ Type | Rysunek Figure | Znamionowe napięcie izolatora Nominal voltage of an insulator | Prąd znamionowy Rated current | Znamionowe napięcie wytrzymywane udarowe piorunowe Nominal lightning impulse withstand voltage | Znamionowe napięcie wytrzymywane przebieżne o częstotliwości sieciowej, na sucho Nominal dry power-frequency withstand voltage | Znamionowa wytrzymałość na zginanie Nominal bending strength | Wymiary Dimensions | | | | | | | Masa Weight | Numer fabryczny Factory number | |
|-------------|-------------------|--|----------------------------------|--|---|---|-----------------------|-----------|-----|-----|----|----|-----|----------------|-----------------------------------|------|
| | | | | | | | H | h1 min | d1 | d2 | a | g | m | | | n |
| SP4/1/250 | | kV | A | kV | kV | kN | mm | mm | mm | mm | mm | mm | mm | mm | kg | |
| SP4/1/400 | A | 1 | 400 | - | 10 | 4 | 245 | 79 | M16 | 85 | 50 | 8 | 180 | 9 | 2,0 | 3018 |
| SP4/1/630 | | | 630 | | | | 255 | | M20 | | 55 | | | | 2,5 | |
| SP4/12/250 | | | 250 | | | 4 | 375 | | M12 | | 37 | | | | 4,5 | |
| SP8/12/400 | B | 12 | 400 | 75 | 35 | 8 | 385 | 156 | M16 | 115 | 42 | 10 | 180 | 11 | 5,0 | 3008 |
| SP8/12/630 | | | 630 | | | 8 | 395 | | M20 | | 47 | | | | 5,5 | |
| SP4/24/250 | | | 250 | | | 4 | 585 | | M12 | | 37 | | | | 10,5 | |
| SP8/24/400 | B | 24 | 400 | 125 | 55 | 8 | 595 | 227 | M16 | 155 | 42 | 12 | 205 | 17 | 11,0 | 3009 |
| SP8/24/630 | | | 630 | | | 8 | 605 | | M20 | | 47 | | | | 11,5 | |
| SP4/36/250 | | | 250 | | | 4 | 810 | | M12 | | 50 | | | | 26,0 | |
| SP8/36/400 | C | 36 | 400 | 170 | 75 | 8 | 820 | 335 | M16 | 190 | 55 | 14 | 190 | 14 | 27,0 | 3006 |
| SP8/36/630 | | | 630 | | | 8 | 830 | | M20 | | 60 | | | | 28,0 | |

Na życzenie odbiorcy sworzeń, nakrętki i podkładki niklowane.

Cap, nuts and washer nickel plated on customer request.